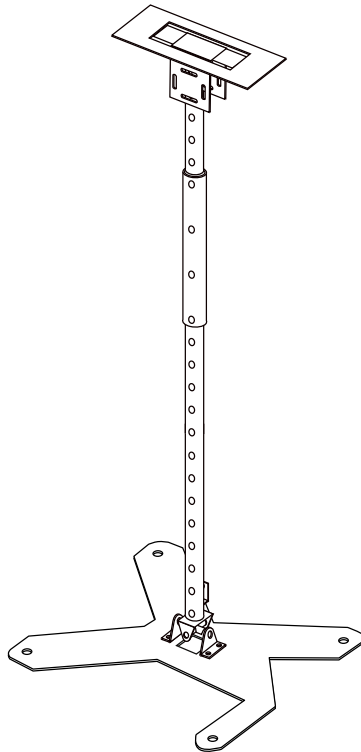


*DreamVision*<sup>®</sup>

**Ceiling mount for INTI 3D Series  
(R9852067)  
INSTALLATION MANUAL**



[www.dreamvision.net](http://www.dreamvision.net)

### **Assembly Instructions:**

This product is designed to be used in private homes.

Correct assembly is essential for the long life and functionality of your Ceiling Mount.

Please observe the following points carefully.

### **Notes on safety:**

- The installation should be performed by authorized technical personnel only.
- Installing the Ceiling Mount should be performed only after you are thoroughly familiar with all of the following safety checks and Installation Instructions. To do otherwise increases the risk of hazards and injury to the user.
- This support is designed for intended use, only with projectors. Use with any non supported appliance may result in instability causing possible injury.
- Do not modify and/or replicate any component.

### **Before assembly:**

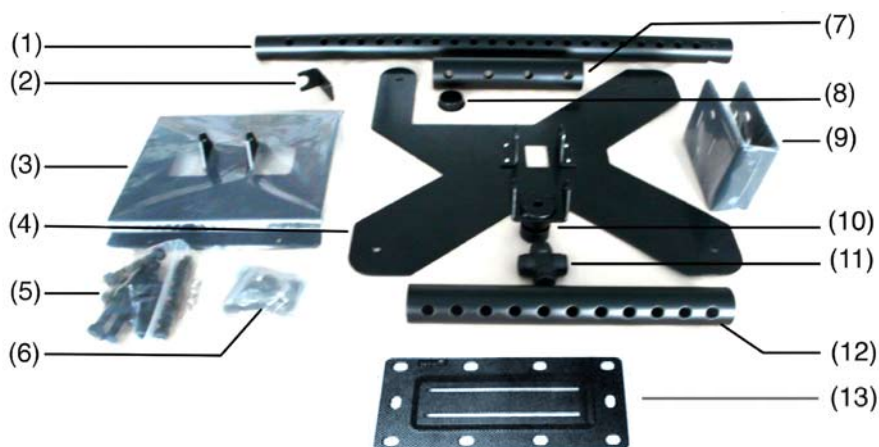
- It is expressly recommended to have installation carried out by a specialist.
- Make sure that the quality of the ceiling is sufficient to hold the weight of the projector plus that of the mount. If there is any doubt regarding the condition and load of the ceiling, please consult a specialist from building trade.
- The fixing materials must be suitable for the type of wall so that the maximum load can be guaranteed. For this reason no fixing materials have been included with the ceiling mount. Please check a specialist, giving the relevant details.
- Also make sure that there are no electricity cables or gas/water pipes in the ceiling.
- Before assembling, check the location of the nearest main socket.

**NB: DreamVision accepts no liability for damages caused by incorrect assembly or by improper use.**

**Kit Content:**

The ceiling mount kit contains the following parts:

Indication	Description	Quantity
(1)	Long extension	1
(2)	L-shape fixation	1
(3)	Ceiling plate (without pipe)	1
(4)	Projector plate	1
(5)	Bolt M8x25	4
	Screw M8x50 with security nut	7
	Screw M8x16 with spring washer	4
(6)	Expanding shell	4
	Washer	4
	Spring lock washer	4
	Button head screw M4x10	4
(7)	Interconnection pipe	1
(8)	Shutoff cap	2
(9)	Ceiling mount U-profile	1
(10)	Yoke	1
(11)	Universal joint	1
(12)	Short extension	1
(13)	Mounting plate ceiling	1



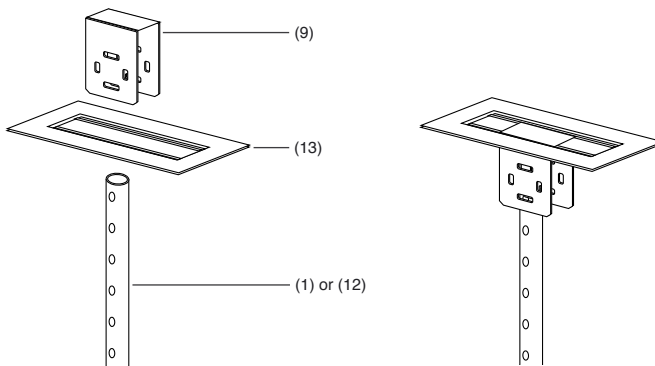
## Assembling the Ceiling Mount

### Preparing the projector support plate

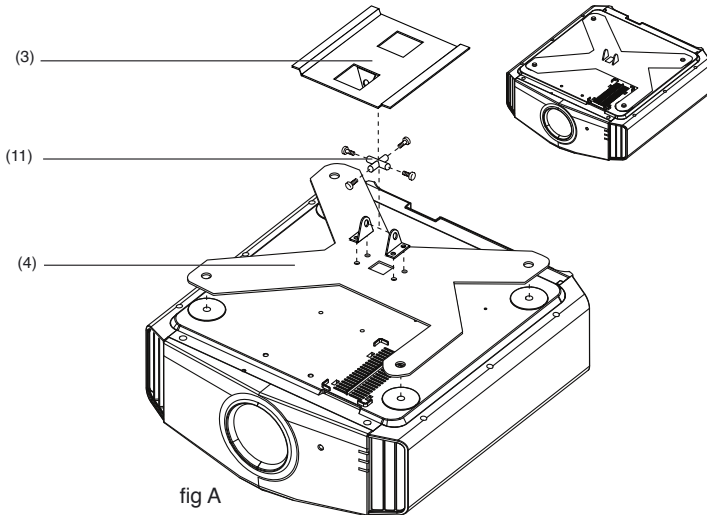
1. Assemble the projector plate (4) to the bottom of the projector using M5x20 bolts.
2. Place the universal joint (11).
3. Secure this position with 2 bolts (5) M8x16. Insert a spring washer between the bolt and the yoke.
4. Place the yoke (10) onto the free side of the universal joint.
5. Secure with 2 bolts (5) M8x16.

### Preparing the ceiling plate

1. Slide the ceiling U-Profile (9) into the two grooves of the ceiling mount plate.
2. Place the mounting plate (13) on the ceiling so that the projector lens is on the perpendicular with the screen.
3. Mark four drill holes
4. Drill the holes (40mm deep)
5. Pull an expanding shell in each hole.
6. Position of the ceiling plate. Slide the U-profile in the middle of the grooves.
7. Secure this position with the four bolts (5) M8x25. Insert a washer (6) between the bolts and the plate.



## Mounting without pipe:



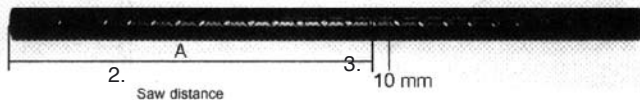
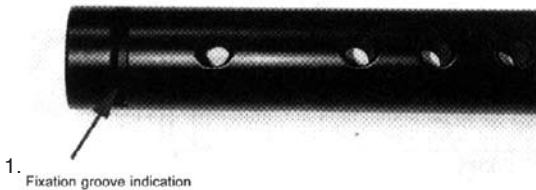
Use the ceiling plate (3) (without pipe) for shorter ceiling distances fig A.

## In-ceiling: using extension pipe(s):

Preparing the extension pipes:

When the distance needed between the projector and the ceiling is less than the total length of the long extension pipe, it should be shortened.

**NB: Note that for distances between 1055mm (41.54 in) and 1155mm (45.47 in), no sawing is necessary as pipe can be slide further into the extension pipe.**



1. Start measuring from the fixation groove side, but start at the top.
2. Measure the calculated distance and place a marker.
3. Saw about 10mm (0.4 in) above the top of the hole next to the marker.

## Mounting with extension pipe(s):

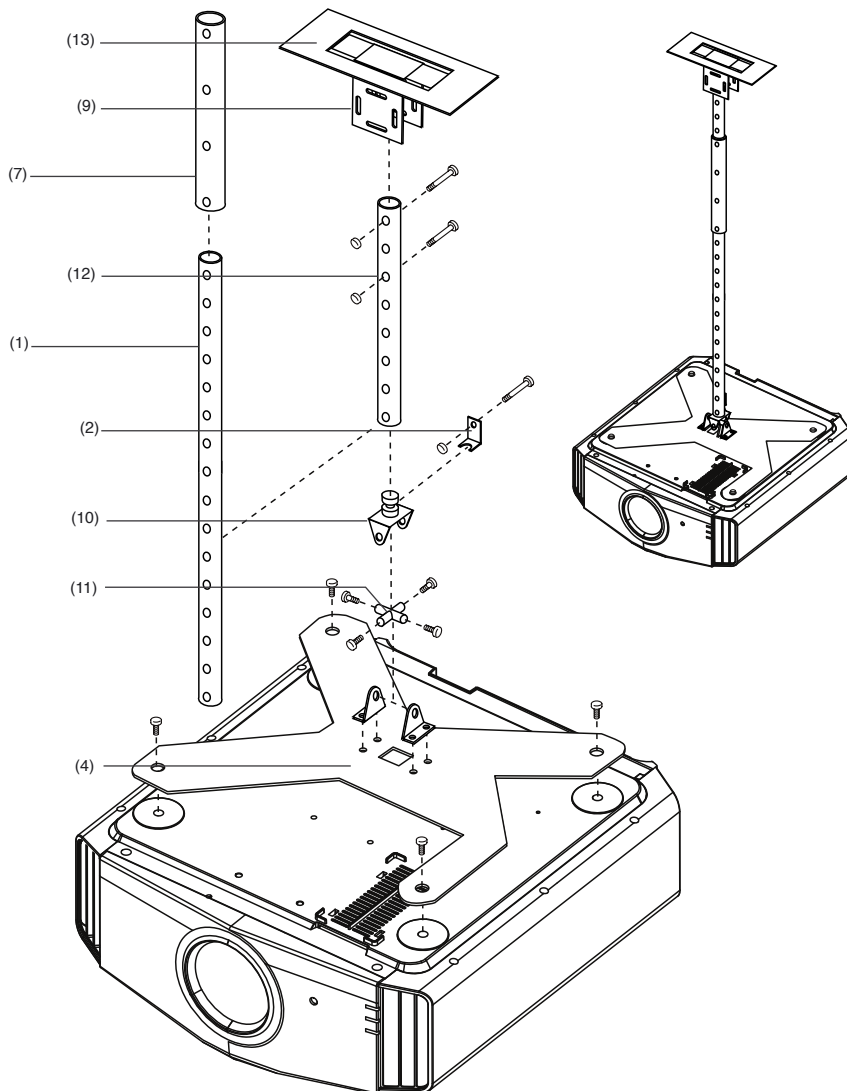


fig B

A cutting point for minimum ceiling distance gives a minimum distance of 28 cm.  
The maximum distance between ceiling and projector using the extension pipe is 115 cm.